



*Simplicity · Solutions*

Version  
**16.0**

***MODU System***  
*Product Catalogue*

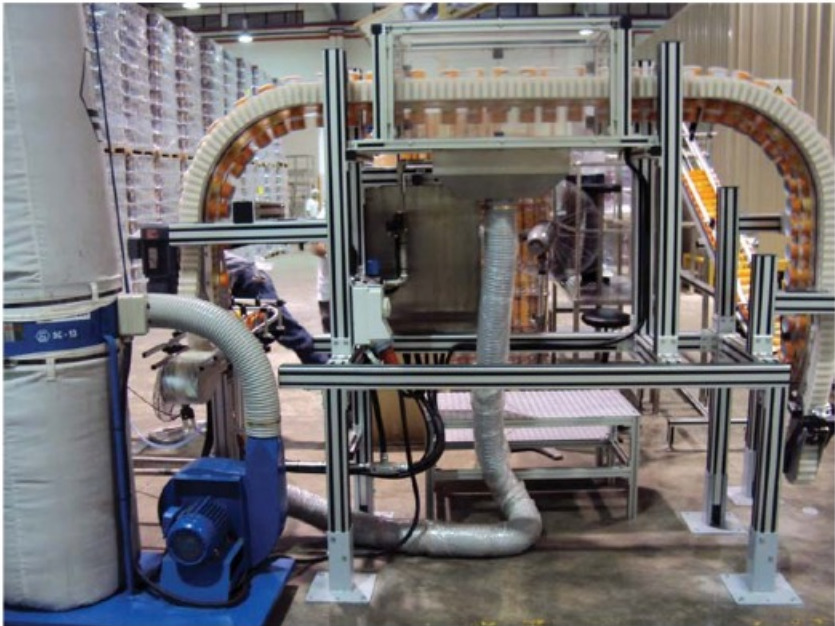


*modu*

# Special Equipment SE



Continuous flow carton / case elevator and lowerator



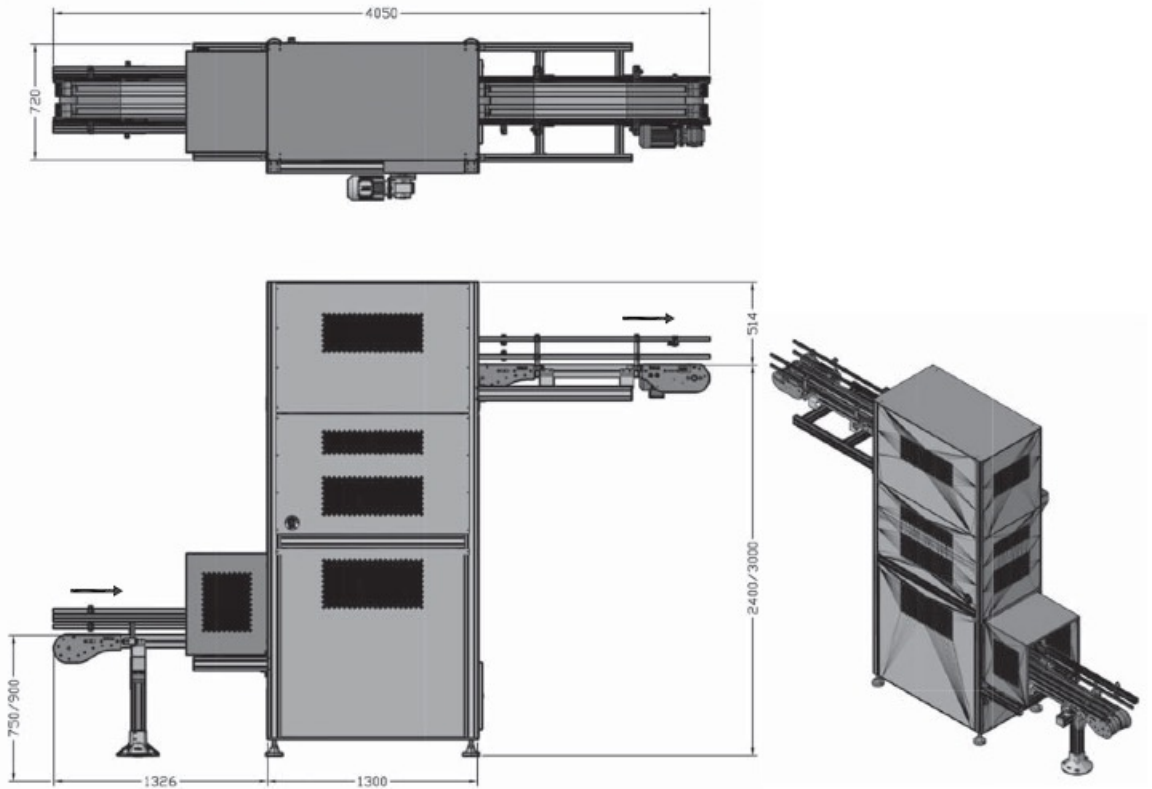
Gripper System

Please consult MODU representative for further information and assistance.

Units: Dimension (mm)

# Special Equipment SE

## Continuous Flow Carton/ Case Elevator and Lowerator



Please specify variable (A), (B), & (C) when placing an order.

MODU System Continuous Flow Elevator / Lowerator is commonly used to convey food and beverage cases, bagged products, trays, and other similar items. It is designed for high speed and large payload capacity. MODU System Continuous Flow Elevators / Lowerator free up floor space in case/carton palletizing lines, warehousing, or in work-in-progress storage applications by transferring products to an overhead conveyor section. This machine is idle to create aiseways, clearance for forklifts, transfer product between floors and etc.

### Specifications:

Power:	230VAC or 415VAC, 3-Phase
Compressed Air:	5bar
Payload:	4.5kg - 30kg
Min Infeed Height:	550mm
Outfeed Height:	2400mm or variable
Throughput:	up to 20 cases/min (depend on product & application)



Please consult MODU representative for further information and assistance.

Units: Dimension (mm)

## Special Equipment SE

### Features

- Available in multiple heights, capacities and payload sizes.
- Continuous-flow elevating—no reciprocating action.
- Easy maintenance access panels.
- Universal mounts for any type of infeed and discharge conveyor.
- aluminum frame and also available in stainless steel.
- Comprehensive guarding.
- Powered infeed and discharge rollers.

### Order Guideline

- Standard infeed height: 750 & 900mm
- Standard outfeed height: 2400 & 3000mm
- Standard lifting capacity: 20 cases/min
- Maximum product size: 400x400x400 mm

Part No.	Specification	
	Infeed Height	Outfeed Height
SE CFC 7524	750	2400
SE CFC 7530	750	3000
SE CFC 9024	900	2400
SE CFC 9030	900	3000

Customized configuration available upon request. Please consult MODU System representative for further information.

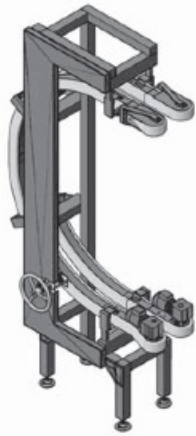


Please consult MODU representative for further information and assistance.

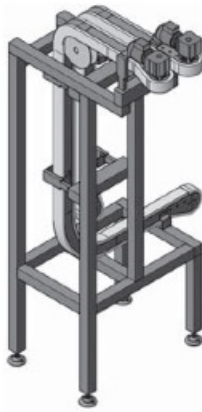
Units: Dimension (mm)

## Special Equipment SE

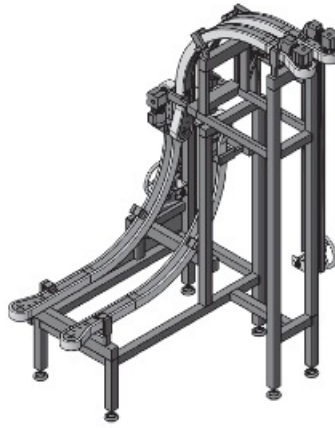
### Gripper System



**C-Flow**



**Simple Gripper Upender**



**Gripper Upender**



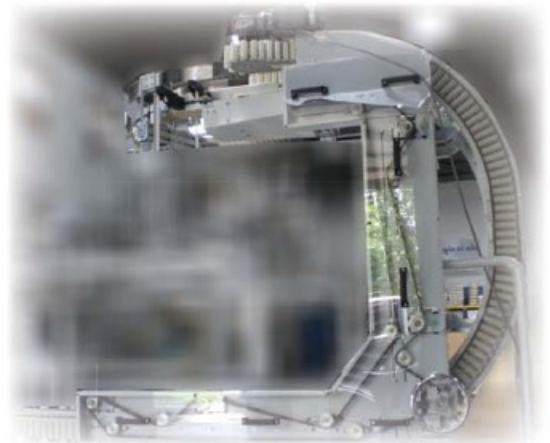
**S-Flow**

#### Features

- Save floor space and conveyor length
- Maximize space utilization by creating cooling buffer at ceiling level.
- Easy integrate with other application such as blower, filling, packaging lines
- Flexible and lightweight - easy to install and match with site arrangement layout.
- High capacity vertical transport
- Quick change over time by incorporating adjustable crank system and digital adjustment readout.
- Smooth handling of products.

#### Basic Functions

1. Product Elevation
2. Product De-Puck
3. Product Reverting
4. Creating Passage Way
5. Inverter Air Rinser
6. Change Orientation



Please consult MODU representative for further information and assistance.

Units: Dimension (mm)